

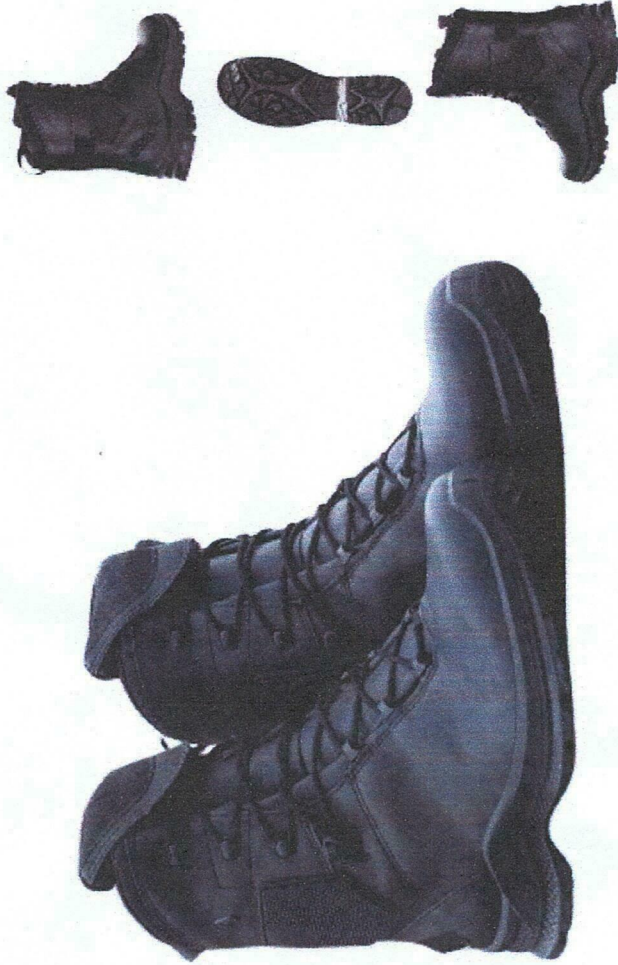
ITEM	DESCRIPTION	QTY	UNIT PRICE B\$	TOTAL PRICE B\$
1	URBAN BOOTS, SIZE UK 5 WIDE	10 PR		
2	URBAN BOOTS, SIZE UK 6 WIDE	20 PR		
3	URBAN BOOTS, SIZE UK 7 WIDE	50 PR		
4	URBAN BOOTS, SIZE UK 8 WIDE	60 PR		
5	URBAN BOOTS, SIZE UK 9 WIDE	30 PR		
6	URBAN BOOTS, SIZE UK 10 WIDE	20 PR		
7	URBAN BOOTS, SIZE UK 12 WIDE	10 PR		
GRAND TOTAL (B\$)				



ANNEX A

SPEKIFIKASI DAN KRITERIA BAGI KASUT URBAN BOOTS YANG DIPOHONKAN

Specifications	
Upper material	Smooth leather
Colour	Black
Boot height	8 inches
Inner liner	Preferably CROSSTECH®
Fastener	2 zone lacing
Conductivity	Anti-static
Others	<ul style="list-style-type: none">• Sun reflect leather• Chemical/bloodborne pathogen protection• Climate system• Washable & exchangeable insole• Built in shock absorption• Anti slip sole• Lightweight• 2 zone lacing• Lace pocket• Ankle protector



<p>Upper Material Waterproof leather 1.6 - 1.8 mm thick, hydrophobic, breathable.</p>	<p>Midsole 2-component PU, light, cushioning, supporting, double density.</p>	<p>UK</p>	<p>EU</p>	<p>US</p>
<p>Inner Lining Laminate Technology: Waterproof and breathable. Abrasion-resistant lining with optimized climate comfort for all seasons, especially flexible for alternating inside and outside use. Superior penetration resistance against blood and body fluids (protection against blood borne bacteria and virus). Increased chemical protection.</p>	<p>Climate System Climate system uses the pumping movement, which permits air circulation with every step - moist air is released and fresh air comes in through the Micro-Dry lining/vent holes at the top of the boot.</p>	<p>5</p>	<p>38</p>	<p>6</p>
<p>Insole Comfortable, cushioning and moisture repel-lent. Separate heel shape for good cushioning and foot insertion. "AIRFLOW" channels.</p>	<p>2-Zone Lacing Two Zone Lacing System enables a separate adjustment of the boot to the foot and leg area.</p>	<p>5.5</p>	<p>39</p>	<p>6.5</p>
<p>Running Sole Made of rubber, fuel-oil, heat resistant as well as cold insulating, non-marking, abrasion resistant and self cleaning.</p>	<p>Durable Sole Rubber mixture for long durability.</p>	<p>6</p>	<p>39</p>	<p>7</p>
	<p>Anti Slip Very good grip on different terrains by profile configuration and use of a special rubber.</p>	<p>6.5</p>	<p>40</p>	<p>7.5</p>
	<p>Ankle Protector System Safety protection zones to prevent injury to the ankle.</p>	<p>7</p>	<p>41</p>	<p>8</p>
		<p>7.5</p>	<p>41</p>	<p>8.5</p>
		<p>8</p>	<p>42</p>	<p>9</p>
		<p>8.5</p>	<p>43</p>	<p>9.5</p>
		<p>9</p>	<p>43</p>	<p>10</p>
		<p>9.5</p>	<p>44</p>	<p>10.5</p>
		<p>10</p>	<p>45</p>	<p>11</p>
		<p>10.5</p>	<p>45</p>	<p>11.5</p>
		<p>11</p>	<p>46</p>	<p>12</p>
		<p>11.5</p>	<p>47</p>	<p>12.5</p>
		<p>12</p>	<p>47</p>	<p>13</p>
		<p>12.5</p>	<p>48</p>	<p>13.5</p>

Smart Lacing System
Smooth and non-pressure adjustment of the boot to the foot, quick lock and lace pocket.

Sun Reflect
Reduces the heating effect of the upper leather by direct sunlight. Sunlight is reflected by the leather, keeping the leather and the feet cooler.

Others
Lightweight, antistatic, metal-free, closed lacing system with lace pocket, pull strap

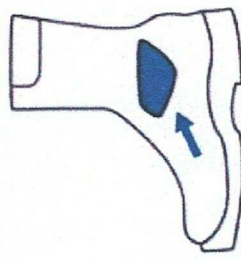
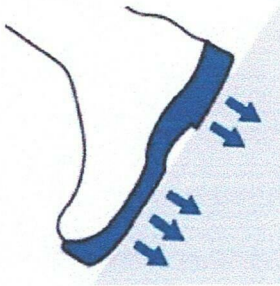


Anti-slip Sole | No matter what the situation, you can rest assured you will stay on your feet. The distinctive tread design combined with the special rubber compound that goes into the sole will maintain its traction on a wide variety of surfaces and in many types of weather, even when it's wet and cold. The high density midsole won't have you feeling every rock and stone either.

Supportive cushioning with Absorption | It will keep you feeling comfortable when you are on the move all day. The built in cushioning in the sole acts as your shock absorption, effectively cushioning each step, while the energy return in the sole gives you extra spring in your step and helps reduce foot and leg fatigue.

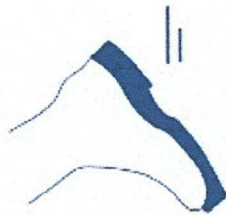
Keep yourself safe from dangerous fluids thanks to **CROSSTECH® technology** | Your job can expose you to dangerous situations. The **CROSSTECH®** technology in its inner lining not only keeps your boot waterproof, it keeps you protected from potentially hazardous fluids like blood, body fluids and chemicals. Your feet stay dry, you stay safe.

Protect your ankle area with the Ankle Protector System | Your job can be physically demanding. You can find yourself having to run and jump with potential obstacles along the way. The Ankle Protector System in it keeps those delicate bones in your ankle protected. As an added benefit, the ankle protector can act as a "brake" when having to crawl on angled surfaces.

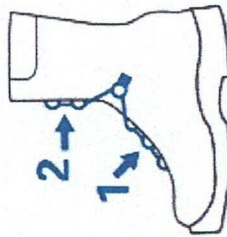




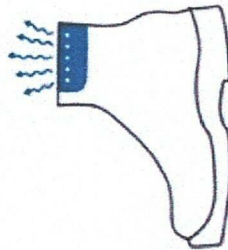
So lightweight, you hardly feel it | It could be the lightest 8" boots you will ever own. Their lighter weight may make you forget you are even wearing boots. It reduces foot and leg fatigue when you are on the move all day.



All day comfort and athletic feel | The running shoe technology built into it is lightweight and flexible. Cushioned insoles give you the extra comfort your feet crave. Enjoy an athletic shoe feel with the function of a duty boot.



Optimal support thanks to 2 zone lacing | It adapts perfectly to your foot. Independently adjust the upper and lower part of your boot just the way you like it for a comfort fit tailored just to you. You like it tight across the foot, but looser on the leg? You can do that. Like it tighter across the ankle for more ankle support? You can do that too.



Breathable comfort with Climate System | It allows your feet to breathe by absorbing the moisture from your feet into special foams between the inner lining and the leather. With every step you take, moist air is released and fresh air comes in through the vent holes at the top of the boot. The Climate System essentially works like an air conditioning system in your boot.

